



IMAGINE... *LIVING OUR PROMISE, CONTINUING THE LEGACY*



ST. PAUL LUTHERAN CHURCH *Capital Campaign*

"I know the plans I have for you, declares the Lord, plans to prosper you and give you a future filled with hope." Jeremiah 29:11

OUR JOURNEY

Soon we will be celebrating 190 years as a congregation. It is a milestone marking God's faithfulness and the commitment of numerous generations of steadfast members and friends. We are the heirs, the beneficiaries of those who came before us. Now it is our turn to equip St. Paul for future ministry.

The Lutheran congregation, which today we call St. Paul, was formed in 1825. The original church building was built in 1841. After a fire in 1866, the main building of the church was rebuilt and an addition for classrooms and offices was constructed in 1952. In 1966, for the first time, St. Paul's became an independent parish, separating from the Jefferson Parish, reflecting a large step for the future of our congregation.

Today, we find ourselves in a challenging time, as a community of Christ, gathering in love, growing by grace, and going forth to serve. Our current mission and ministries face the struggles of tired and outdated facilities, incapable of supporting the future we envision for St. Paul. We have chosen to meet these challenges by conducting our congregation's first comprehensive, capital campaign.

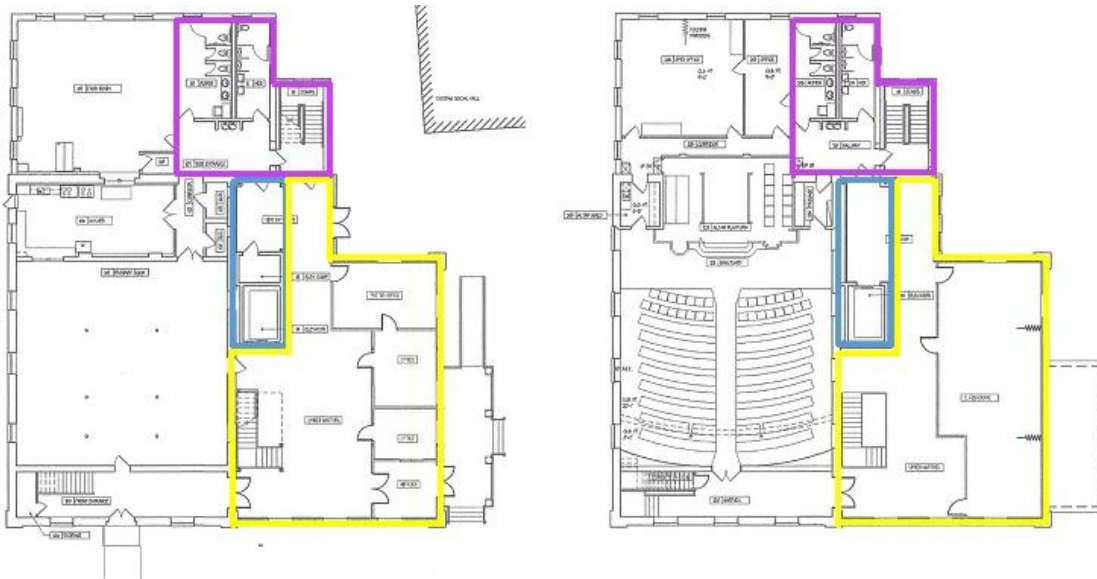
THE IMAGINE CAPITAL CAMPAIGN, 2015-2017, HAS THREE OBJECTIVES:

- Conduct the Phase I & Phase II of expansion and renovation
- Grow our family ministry (through all life passages)
- Expand our local, national, and global outreach

The renovations and expansion will enable St. Paul to share our resources and love of Christ with the congregation and community. However, In order to effectively address our immediate and long-term needs, we have set an ambitious goal of raising \$500,000 through the IMAGINE Capital Campaign.

"FOR TRULY I TELL YOU, IF YOU HAVE FAITH THE SIZE OF A MUSTARD SEED, YOU WILL SAY TO THIS MOUNTAIN, 'MOVE FROM HERE TO THERE,' AND IT WILL MOVE; AND NOTHING WILL BE IMPOSSIBLE FOR YOU." MATTHEW 17:20

IMAGINE: CONTINUING OUR LEGACY...



ACCESSIBILITY

CURRENT CAMPAIGN

Phase 1 (highlighted in **BLUE**) **Elevator Addition and Phase 2** (highlighted in **PINK**) **Stair & Restroom Addition**

- **ADA Compliant** Elevator
- **ADA Compliant** Restrooms
- **NEW** entry to Pathway Room
- **UPGRADED** plumbing and electrical, which will allow future upgrades to the kitchen.

A new elevator which will include a new entry to the Pathway Room and adequate restroom facilities, ALL of which will be **A**MERICANS WITH **D**ISABILITIES **A**CT compliant. The elevator will be large enough to accommodate those in wheelchairs and mobility disabilities. This will result in updating the plumbing and electrical, which will allow for future upgrades to the kitchen to better serve the congregation and community.

LEARNING AND SERVICE

NEXT CAMPAIGN

Phase 3 (highlighted in **YELLOW**) **Classrooms & Offices**

- **MORE** Classrooms
- **NEW** Nursery
- **NEW** Narthex
- **MORE** Offices

This will increase opportunities for meetings and activities; to foster creativity and inspire ministries; encourage productivity, and offer learning opportunities—serving both the congregation and the community.

IMAGINE: LIVING OUR PROMISE

OUTREACH

IMAGINE THE POSSIBILITIES OF SHARING OUR RESOURCES

COMMUNITY

- Refrigerators for the Jefferson Ecumenical Food Bank
- Valley Elementary School Back-to-School supplies drive
- Valley Elementary School the "Mitten Tree" (clothing and toys for families at Christmas-time)
- Stephen Ministries
- Soup Kitchen
- Trunk or Treat
- More space to accommodate events, meetings, charity drives

GLOBALLY

- Mission Trips
- Malaria Campaign, God's Global Barnyard, ELCA Good Gifts
- Monthly Spirit Giving
- Equal Exchange, Lutheran World Relief

THIS WILL **ENCOURAGE** AND **FOSTER** THE CHURCH'S **STEWARDSHIP AND EVANGELISM MINISTRIES!**

FAMILY MINISTRY

WE ARE COMMITTED TO THE EXPANSION OF OUR FAMILY MINISTRY THROUGH ALL LIFE PASSAGES

THERE ARE MANY TYPES OF FAMILIES

- married couples without children
- single parents and their children
- grandparents
- married parents and their children
- single adults
- empty-nesters
- youth
- homebound

YOU ARE A MEMBER OF A FAMILY. WE WILL STRIVE TO STRENGTHEN FAMILIES' FAITH AND HELP THEM TO REACH A PLACE WHERE IT IS TALKED ABOUT AND SHARED.



JUST IMAGINE: WHERE WILL WE BE IN 2025 WHEN WE CELEBRATE 200 YEARS?

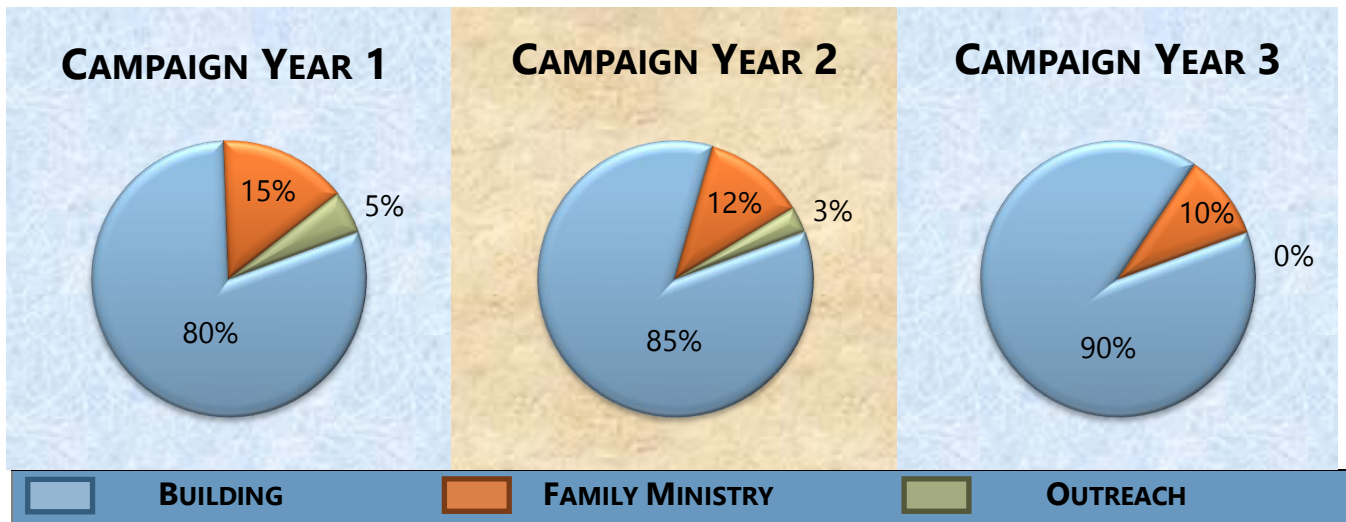
We believe that God will provide what is needed for St. Paul to become a more vibrant, growing, thriving congregation committed to developing disciples and to being deeply embedded in our community and in our world. Part of this focus is to increase the depth and widen the scope of our ministries. No dream of ours is bigger than God's ability to provide for us.

"In God, all things are possible." Matthew 19:26

CAPITAL FUND APPEAL GIVING GUIDE

THIS GUIDE IS DESIGNED TO HELP US MEET OR EXCEED OUR THREE YEAR GOAL. THE GUIDE BELOW IS DESIGNED TO HELP YOU PLACE YOURSELF WITHIN THE SCALE OF GIFTS. PRAY AND DISCERN WHAT YOUR MOST GENEROUS GIFT CAN BE.

NUMBER OF GIFTS NEEDED	PER WEEK	PER MONTH	PER YEAR	3 YEAR TOTAL
2	\$320-\$640	\$1,333-\$2,750	\$16,000-\$33,000	\$50,000-\$100,000
4	\$160	\$695	\$8,333	\$25,000
6	\$96	\$417	\$5,000	\$15,000
8	\$77	\$333	\$4,000	\$12,000
12	\$64	\$278	\$3,333	\$10,000
10	\$50	\$217	\$2,600	\$7,800
10	\$40	\$174	\$2,080	\$6,240
12	\$30	\$130	\$1,560	\$4,680
15	\$20	\$87	\$1,040	\$3,120
MANY	\$10-\$20	\$44-\$87	\$520-1,040	\$1,560-\$3,120



ST. PAUL LUTHERAN CHURCH
 3864 JEFFERSON PIKE, PO BOX 637
 JEFFERSON, MD 21755

PHONE: 301-473-8626, EXT. 101 [MAIN OFFICE] EXT. 103 [PASTOR]

E-MAIL: INFO@STPAULJEFF.ORG | WEB: [HTTP://WWW.STPAULJEFF.ORG](http://WWW.STPAULJEFF.ORG)

PASTOR KATRINA HOLLAND